

Regulatory role:

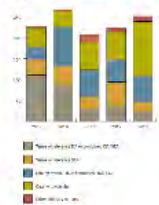


Netherlands Commission for Environmental Assessment

- Since 1987: legally mandatory quality review of EIA and SEA
- Also knowledge center and help desk

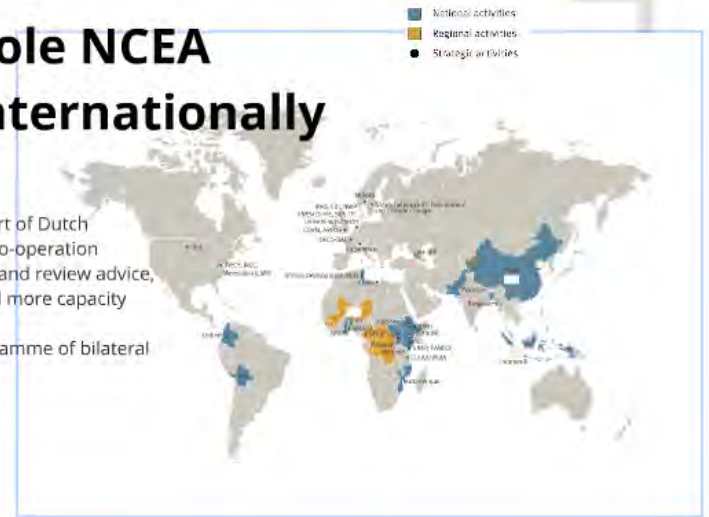
Role NCEA in Netherlands

Number of advices:



Role NCEA internationally

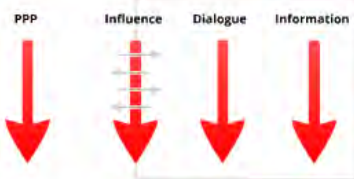
- Since 1993, part of Dutch international co-operation
- Originally ToR and review advice, later more and more capacity development
- Growing programme of bilateral projects



NCEAs view on SEA



SEA = 3 interlinked continuous processes



SEA for Good City Models

- Special Policy Study on "Good City Models, under the concept of Ecological Civilization"
- Co-chaired by the Netherlands
- Including background paper on SEA



Challenges identified in SPS:

- Limited political or stakeholder involvement
- Short-term focus on cost and budget
- Limited stakeholder involvement
- Limited data availability
- Limited data for decision making
- Lack of capacity in decision making
- Lack of data for decision making
- Lack of data for decision making

Recommendation in SPS: Use SEA!

- To involve relevant govt bodies and improve sectoral integration
- To organise public consultation
- To develop and discuss spatial layout design options
- As basis for measurement and evaluation follow-up

SEA for Urban Planning in the Netherlands



Illustration Rotterdam: SEA to establish environmental management framework

Highlights SEA:

- Developed different scenarios and explored management instruments needed in SEA
- Developed Local Environmental Management Plan to manage environmental carrying capacity
- Activities to be done in the plan: systematically permit, other relevant activities (EIA or environmental assessment), risk assessment and environmental management system for (design) management, monitoring and evaluation



Illustration Amsterdam: SEA as a platform for consultation

Highlights:

- SEA for the masterplan for the city of Amsterdam
- Key goal to inform and involve citizens
- Different types of involvement at different moments
- Early and extensive support package in support for the plan



Illustration Randstad: Optimising Sustainability

Highlights SEA:

- SEA was used to develop options and compare against sustainable development objectives
- Options for urbanisation: 8 from design studios + Cabinet vision
- Sustainability framework to compare options: people, planet, profit



Illustration The Hague: Overcoming sectoral boundaries in city planning

Lessons learned:

- Do proactive identification until an SEA is dropped on your desk
- Work closely with the planners work in teams
- Lead your fellow colleagues through the SEA process, manage relations
- Work from a common perspective (good city model?)
- Make connections to the directors and politicians
- Secure SEA results in final decision-making



Regulatory role:



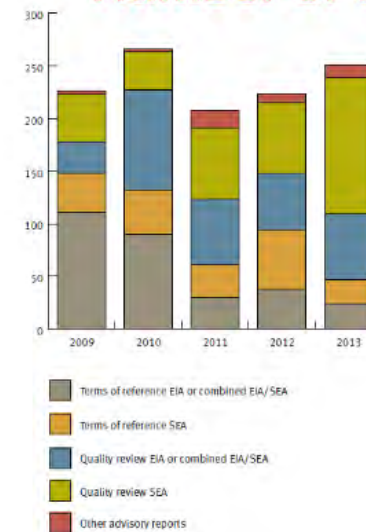
Role NCEA in Netherlands



Netherlands Commission for
Environmental Assessment

- Since 1987: legally mandatory quality review of EIA and SEA
- Also knowledge center and help desk

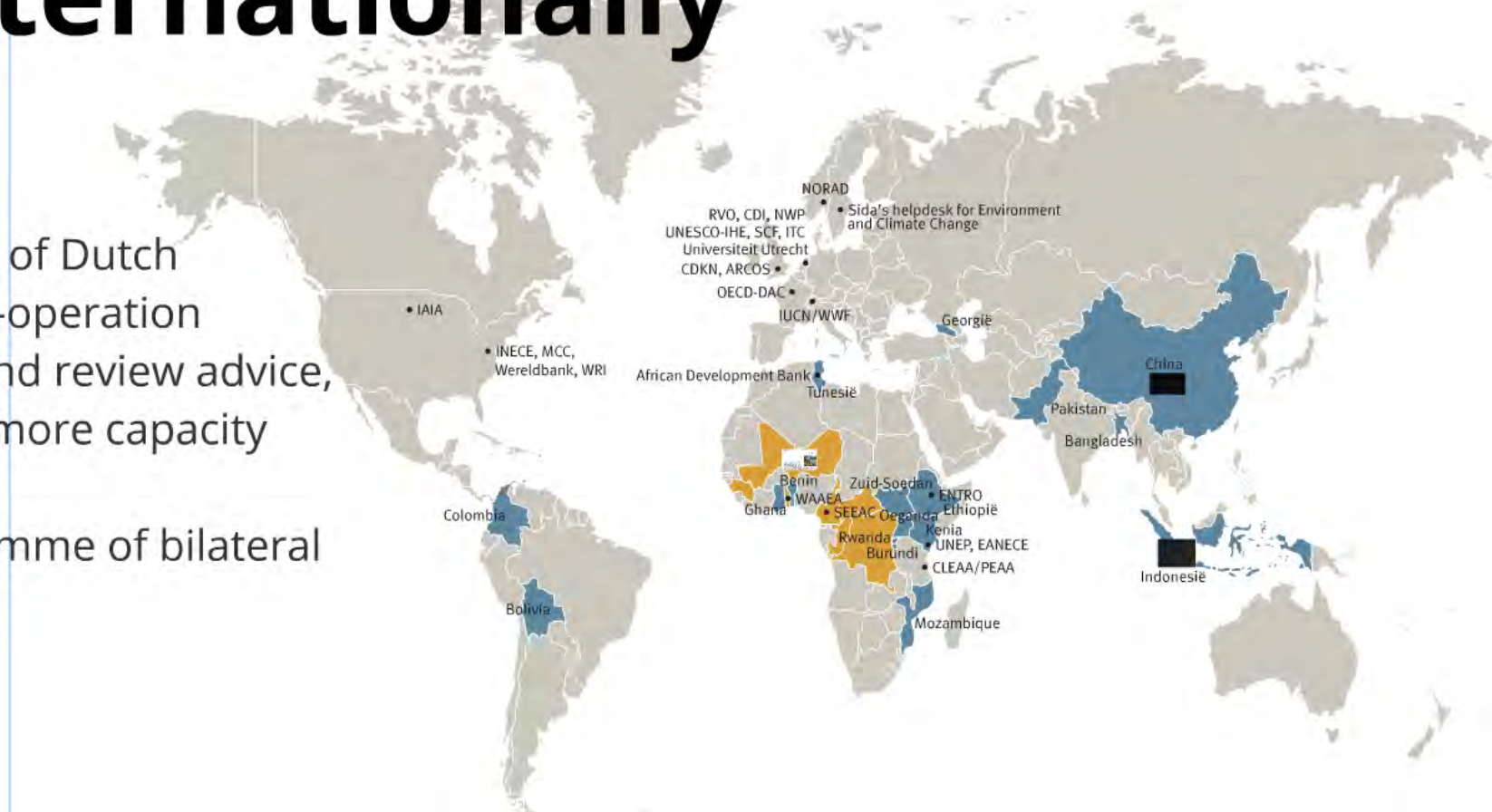
Number of advices:



Role NCEA internationally

- National activities
- Regional activities
- Strategic activities

- Since 1993, part of Dutch international co-operation
- Originally ToR and review advice, later more and more capacity development
- Growing programme of bilateral projects



04 november 2014

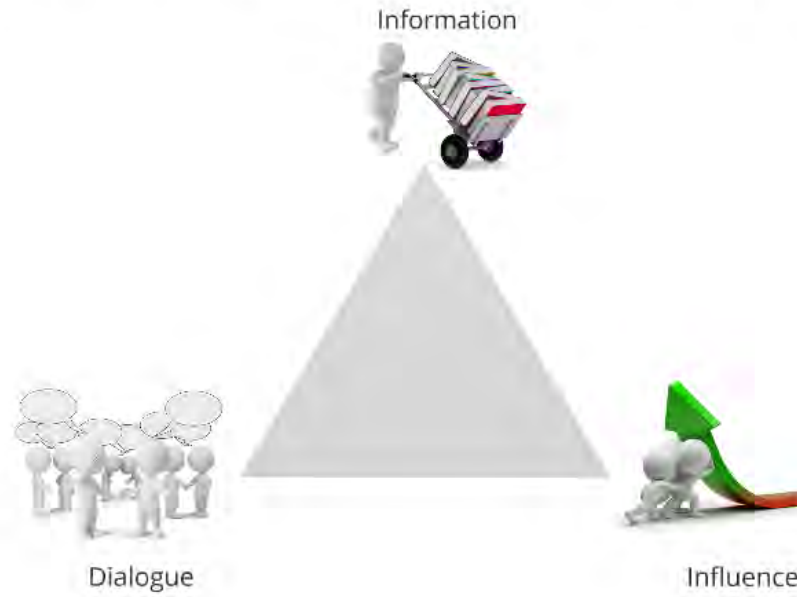
Better safety measures for transboundary Adjarala dam

The NCEA reviewed the ESIA for a hydro-electric dam that is planned at Adjarala, at the border between Benin and Togo. The development of the dam is highly controversial. An earlier dam in the same river had considerable impact on livelihoods and safety of thousands of people. The NCEA working group concluded that the ESIA did not clearly describe prevention of or compensation for similar impacts of the new Adjarala dam. The environmental ministers of Benin and Togo postponed the construction permit for the dam until this information would be provided.

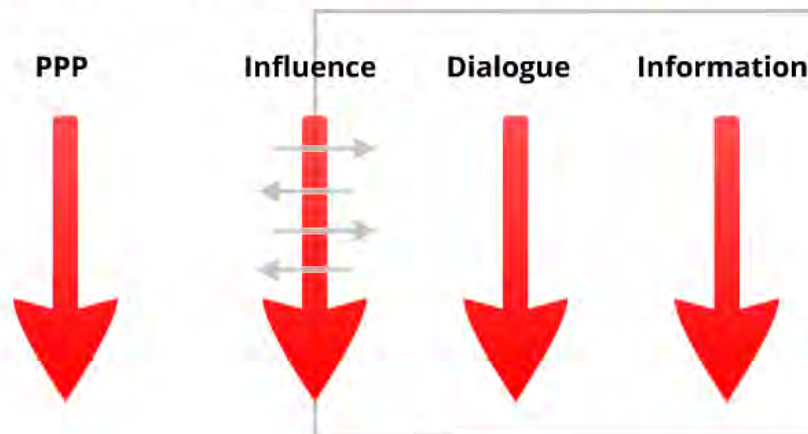


Benin

NCEAs view on SEA



SEA = 3 interlinked continuous processes



- Special Policy Study on "Good City Models, under the concept of Ecological Civilization"
- Co-chaired by the Netherlands
- Including background paper on SEA



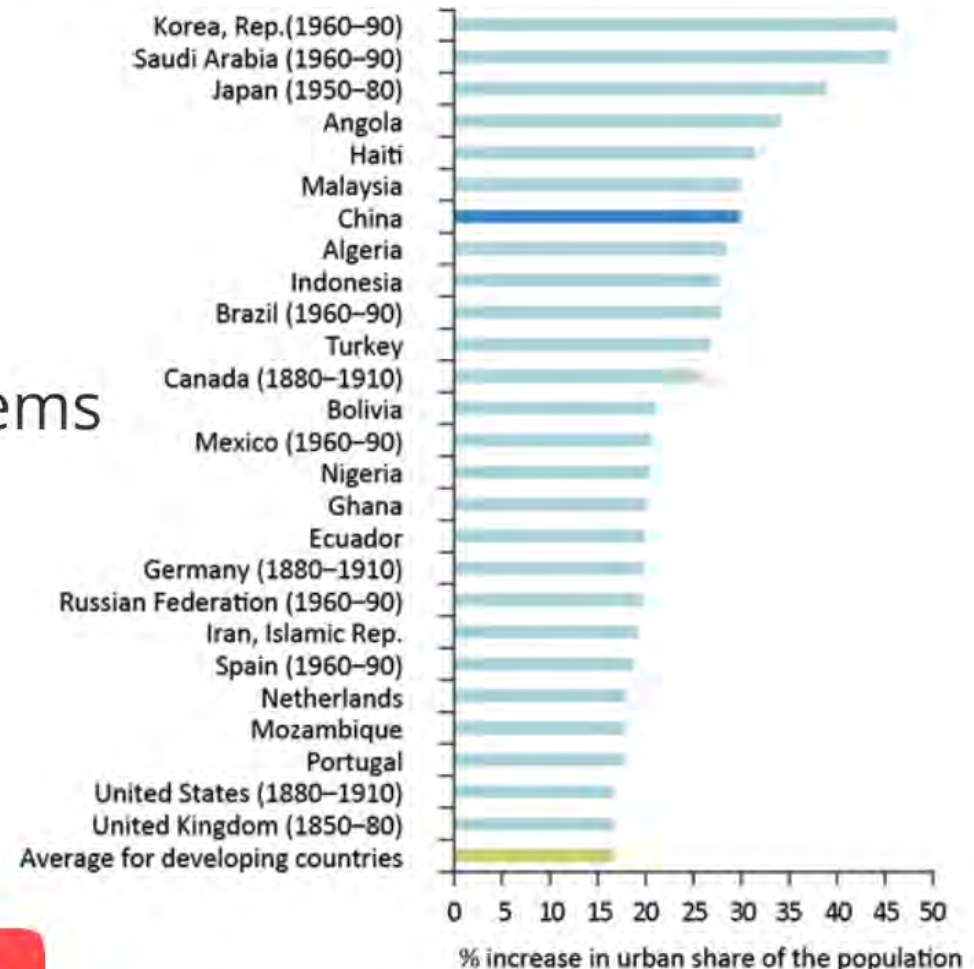
中国环境与发展国际合作委员会

China Council for International Cooperation
on Environment and Development

WWW.CCICED.NET

Challenges identified in SPS:

- Speed and nature of urban development is leading to:
 - Pressure on natural and cultural heritage
 - Insufficient transport systems
 - Insufficient attention to climate change risk
 - Liveability problems
- Lack of coherence in planning system
- Public participation needed for people-oriented development



Time period for all countries is 1978–2012, unless otherwise noted.

Source: World Bank (2014) Urban China; staff calculations based on World Development Indicators and Bairoch and Goertz (1986).



Recommendation in SPS: Use SEA!



- To involve relevant govt bodies, and improve sectoral integration
- To organise public consultation
- To develop and discuss (spatial lay-out) design options
- As basis for measurement and evaluation follow-up

Illustration Rotterdam: SEA to establish environmental management framework

With thanks to Ruud Krijnen, DCMR

Highlights SEA:

- Developed different scenarios, and explored management instruments needed in SEA
- Developed one “Harbour Environmental Plan” to manage environmental carrying capacity
- Activities/projects that fit in the plan are automatically permitted, others need additional EIA or are not allowed
- But: Maintaining such a dynamic system requires a solid system for data management, monitoring and corrections.

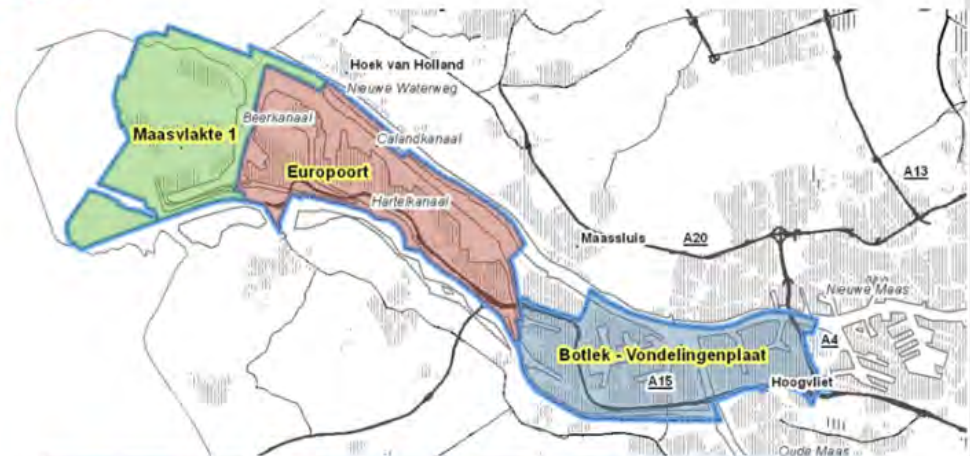


Illustration Randstad: Optimising Sustainability

Highlights SEA:

- SEA was used to develop options and compare against sustainable development objectives
- Options for urbanisation: 3 from design studios + Cabinet vision
- Sustainability framework to compare options: people, planet, profit.



Beoordelingstabel 'hier en nu': Randstad 2040

		Wereldstad	Kuststad	Buitenstad	Kabinet- visie R2040
Ondergrond/ water	Wateroverlast en veiligheid: waterberging	3	3	2	3
	Mate waarin functies passen bij de eigenschappen van de ondergrond	1	4	2	2
	Kans X gevolgd bij calamiteit (wateroverlast en overstroming ³)	3	4	1	2
Energie en grondstoffen	Potentie CO ₂ reductie van circa 50 % tov 1990 te realiseren	1	4	2	2
Mobiliteit	Bereikbaarheid van andere mensen en voorzieningen (winkels, scholen, sport, etc)	1	4	2	2
	Bereikbaarheid bedrijven (zakelijk personenvervoer en goederenvervoer)	1	2	3	3
	Kwaliteit en verknoping van de netwerken (OV-auto-fiets)	1	3	3	3
Natuur	Behoud kwaliteit Natura 2000/EHS	2	4	1	2
	Ruimte voor nieuwe natuur in de Randstad	1	4	1	1
Landschap- pelijke kwaliteit	Kansen op verbeteren ruimtelijke kwaliteit, herstructurering	1	2	4	2
	Kansen op verbeteren ruimtelijke kwaliteit, versnippering	1	4	1	1
	Herkenbaarheid historische landschappen	1	4	3	2
Kwaliteit leefomgeving	Geelidsverlast	4	1	1	3
	Externe veiligheid (beheersen van de risico's voor de omgeving bij gebruik, opslag en vervoer van gevaarlijke stoffen)	2	1	4	3
	Sociale cohesie /betrokkenheid mensen bij hun woonomgeving	4	3	1	2
	Veilige woonomgeving	4	1	1	3

Illustration Amsterdam: SEA as a platform for consultation

Highlights:

- SEA for the masterplan for the city of Amsterdam
- Key goal to inform and involve citizens
- Different types of involvement at different moments
- Early and extensive support paid off in support for the plan



Illustration The Hague: Overcoming sectoral boundaries in city planning

With thanks to Alfons Finkers, City of The Hague

Lessons learned:

- Be proactive (don't wait until an SEA is dropped on your desk)
- Work closely with the planners: work in teams
- Lead your fellow colleagues through the SEA process, manage relations
- Work from a common perspective (good city model?)
- Make connections to the directors and politicians
- Secure SEA results in final decision-making

